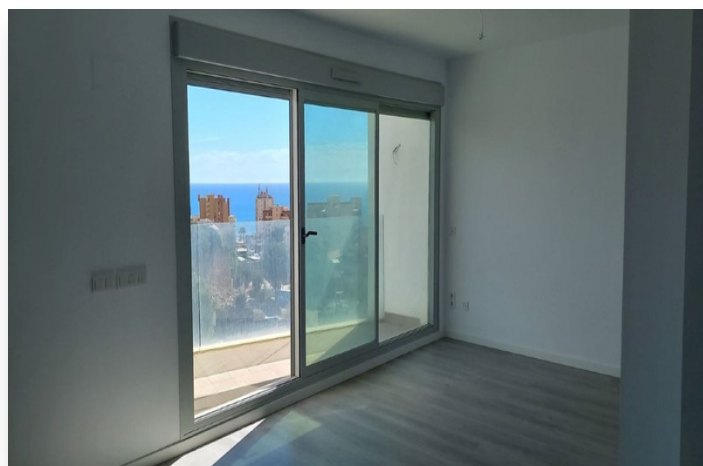
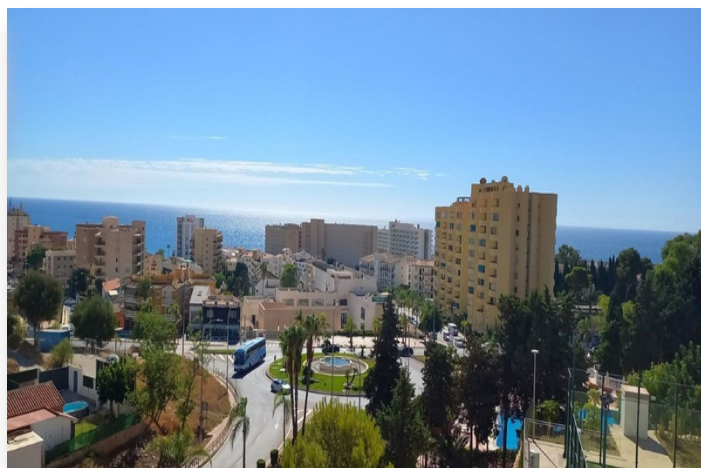
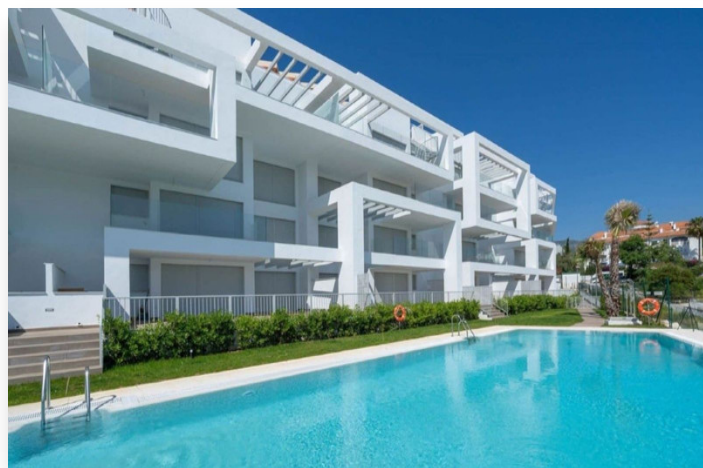


Penthouse in Torremolinos

379,000 €

Reference: R4140418 **Bedrooms:** 2 **Bathrooms:** 2 **Build Size:** 75m² **Terrace:** 60m²



Location: Torremolinos

Panoramic views from this corner penthouse located in the sought after complex of Residencial White Stones. Ideally positioned on the western limits of the Torremolinos borderline with Benalmadena. Walking distance to the beach, train station in Montemar, commercial centre and schools. Modern contemporary style low density community composed of 40 apartments with paddle tennis courts, landscaped gardens and a swimming pool. The property is composed of a lounge with an open plan kitchen, 2 bedrooms, 2 bathrooms with windows and a terrace. Roof top solarium of 43m2 with open sea views. Included are two underground garage spaces.

Features:

Setting

Urbanisation
Close To Shops
Close To Sea
Close To Schools

Pool

Communal

Orientation

South East
South

Condition

Excellent

Climate Control

Air Conditioning

Views

Sea View
Panoramic
Garden
Pool
Urban

Features

Covered Terrace
Near Transport
Lift
Ensuite Bathroom
Private Terrace
Double Glazing
Fitted Wardrobes
Tennis Court

Kitchen

Partially Fitted

Garden

Communal

Security

Gated Complex
24 Hour Security

Parking

Garage
More Than One

Category

Resale
Contemporary