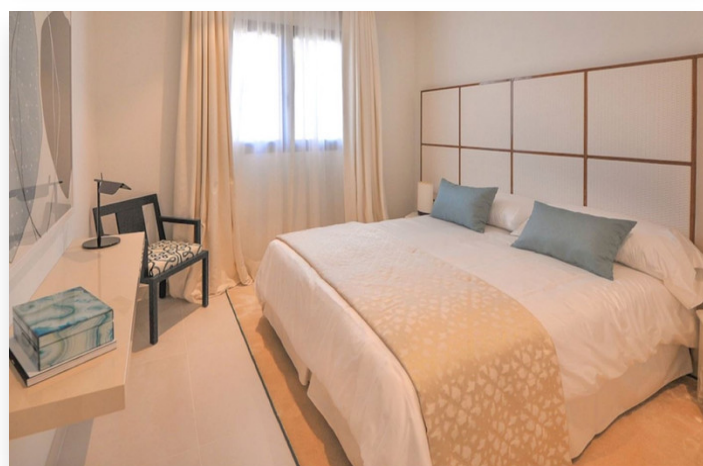
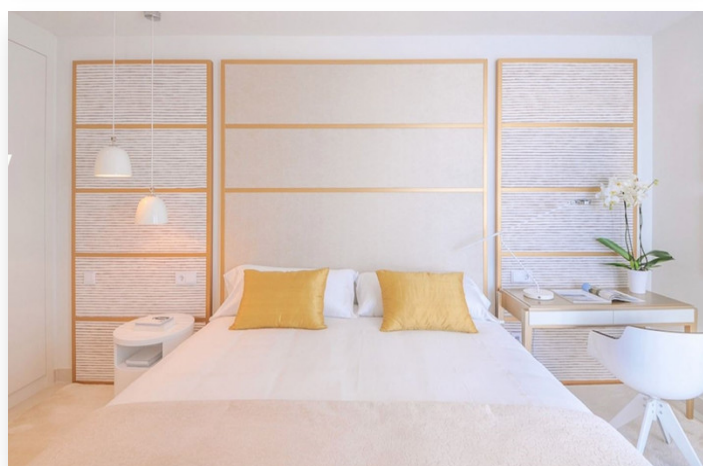


Apartment in Benalmádena

639,000 €

Reference: R3344362 **Bedrooms:** 3 **Bathrooms:** 2 **Build Size:** 133m² **Terrace:** 48m²



Location: Benalmádena

A high quality, innovative and sustainable residential community tucked into a gentle green slope that overlooks the Fuengirola coastline. Over 100.000 m2 of sustainable park landscaping, unrivaled on-site facilities and concierge services. The project with 900 units will be built in various phases. The apartments, garden and sky villas in the first phase of 76 units are laid out in small, intimate blocks of 5-7 properties each, and surrounded by gardens carefully landscaped. Beautifully styled contemporary apartments and sky villas, 21st century amenities, extensive green areas and a panoramic overview of the Mediterranean sea is what sets this development apart. It is built around an exceptional quality of life where residents are encouraged to lead healthier lives with an outstanding range of wellness facilities and services. Amenities will include an array of large and small swimming pools, abundant green zones, leisure and outdoor kitchen and picnic areas with direct access from the apartments.

Features:

Setting

Urbanisation
Close To Shops

Pool

Communal

Features

Covered Terrace
Lift
Storage Room
Ensuite Bathroom
Private Terrace
Double Glazing
Restaurant On Site
Domotics
Fitted Wardrobes

Security

Gated Complex
24 Hour Security

Orientation

South

Climate Control

Air Conditioning

Kitchen

Fully Fitted

Parking

Underground

Condition

Excellent

Views

Sea View
Garden
Pool

Garden

Communal