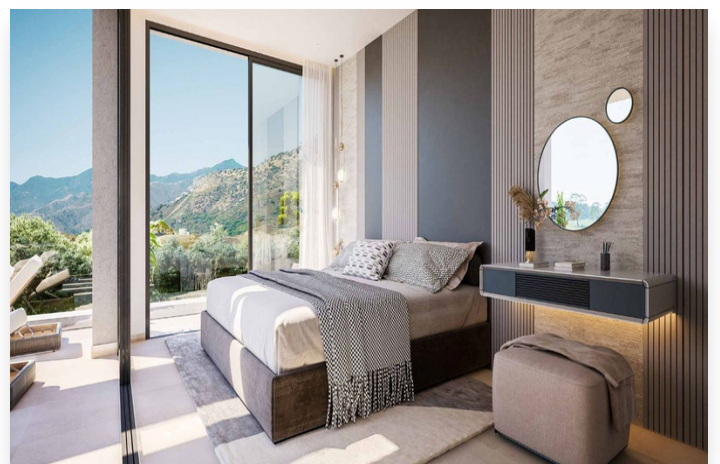
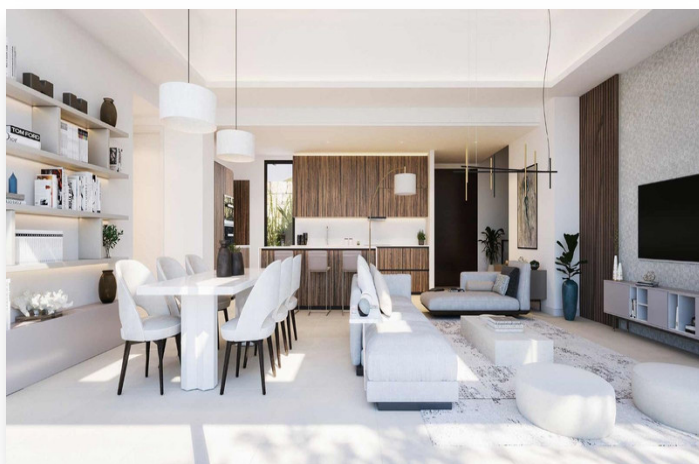
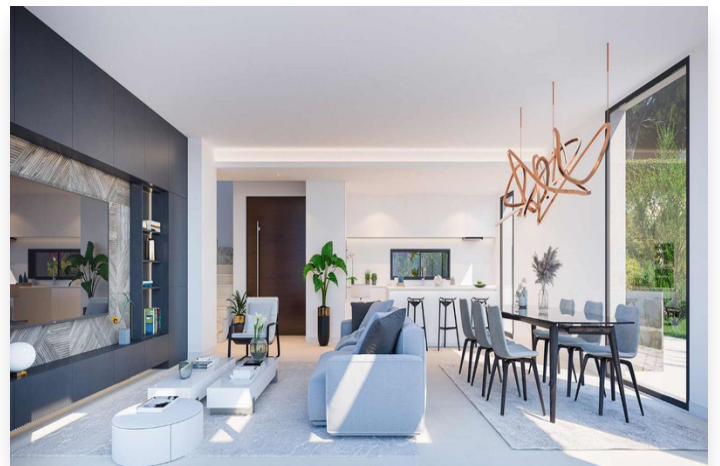


## Villa in Benahavís

**1,650,000 €**

**Reference:** R4057948 **Bedrooms:** 3 **Bathrooms:** 3 **Plot Size:** 650m<sup>2</sup> **Build Size:** 379m<sup>2</sup> **Terrace:** 172m<sup>2</sup>





## Location: Benahavís

La Finca de Jasmine is a gated and secure community of 14 villas set a privileged location in Benahavis with club house, spa and gym with verdant Mediterranean gardens and amazing panoramic sea views. Villa Lavanda offers panoramic south facing views. Modern open plan living space which includes 3.8 metre high ceilings. The living, dining and kitchen area lead seamlessly to the outdoor private pool and landscaped gardens. Consisting of 3 bedroom suites, 2 of which have direct access to the pool and garden zone. From the ground floor enter the generously sized basement which offers natural light, flexible accommodation including WC, laundry room and multiuse large space. The basement level also features access to the double garage that is entered externally via the electric doors. Some of the unique features include floor to ceiling windows, extra-large porcelain tiles on the floor, underfloor heating, and the use of natural materials that help blend the home with the surrounding landscape.



## Features:

### Setting

Close To Golf  
Urbanisation

### Pool

Private Pool  
Communal  
Heated  
Indoor

### Features

Covered Terrace  
Storage Room  
Ensuite Bathroom  
Private Terrace  
Double Glazing  
Gym  
Sauna  
Fitted Wardrobes  
Jacuzzi

### Security

Gated Complex  
24 Hour Security

### Orientation

South

### Climate Control

Air Conditioning

### Kitchen

Fully Fitted

### Parking

Garage  
More Than One

### Condition

Excellent

### Views

Sea View  
Mountain  
Garden  
Pool

### Garden

Private

### Category

Contemporary