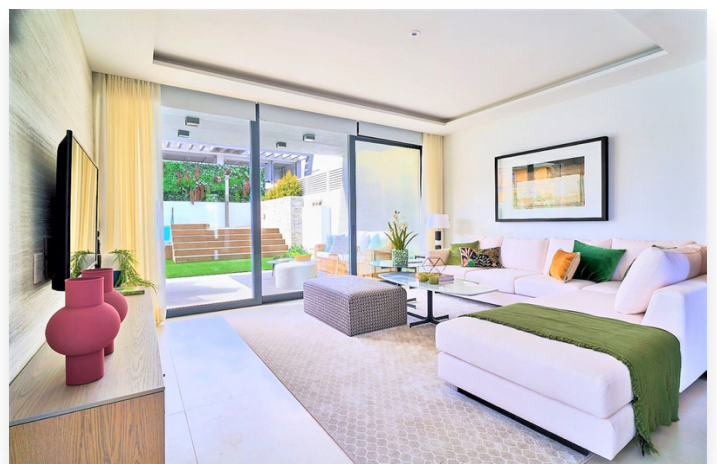


## Semi Detached in Puerto Banús

**1,915,000 €**

**Reference:** R3645629 **Bedrooms:** 3 **Bathrooms:** 4 **Plot Size:** 68m<sup>2</sup> **Build Size:** 298m<sup>2</sup> **Terrace:** 139m<sup>2</sup>



## **Location: Puerto Banús**

Newly built residential community of only 14 semi-detached villas and an independent villa located on the west side of Puerto Banús. Luxury homes with large outdoor spaces and lush tropical gardens. Contemporary style architecture with large windows, bright interiors, a private natural grass garden with swimming pool and roof solarium. Modern design homes built to maximize comfort and relaxation with a layout that focuses on detail, privacy and the views of the beautiful surroundings. The Residential Complex has video surveillance cameras and a maintenance and security service. Exclusive homes in a select enclave that boasts a great socio-cultural wealth, and is endowed with a wide variety of quality leisure options with infinite possibilities of enjoyment.

## Features:

### Setting

Beachside  
Urbanisation  
Close To Shops  
Close To Sea

### Pool

Private Pool

### Features

Covered Terrace  
Storage Room  
Ensuite Bathroom  
Private Terrace  
Double Glazing  
Fitted Wardrobes

### Parking

Garage  
Private

### Orientation

South

### Climate Control

Air Conditioning

### Kitchen

Fully Fitted

### Condition

Excellent

### Views

Garden  
Pool

### Security

Gated Complex  
24 Hour Security  
Alarm System