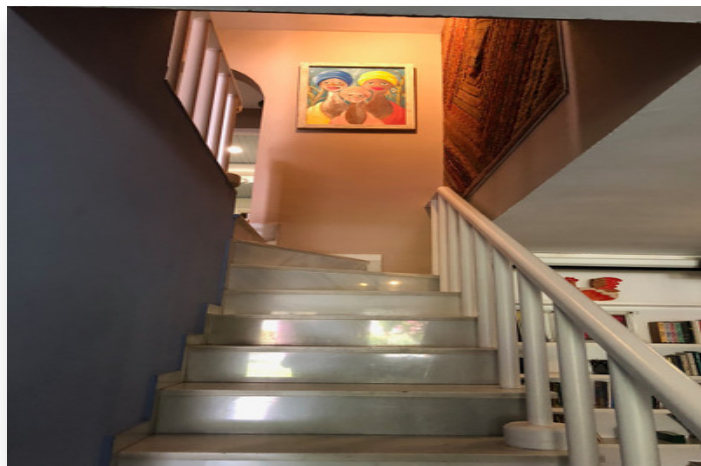


Semi Detached in Puerto Banús

997,500 €

Reference: R2552975 **Bedrooms:** 5 **Bathrooms:** 5 **Plot Size:** 350m² **Build Size:** 300m²





Location: Puerto Banús

Puerto Banús, Costa del Sol

5 Bedrooms, 5 Bathrooms, Built 300 m², Garden/Plot 350 m².

Setting : Close To Shops.

Orientation : South East.

Pool : Private.

Climate Control : Air Conditioning, Hot A/C.

Views : Mountain, Country, Panoramic.

Features : Fitted Wardrobes, Private Terrace, ADSL / WIFI, Ensuite Bathroom, Marble Flooring, Double Glazing.

Furniture : Fully Furnished.

Kitchen : Fully Fitted.

Garden : Private.

Security : Entry Phone.

Category : Investment, Reduced, Resale.



Features:

Setting

Close To Port
Urbanisation
Close To Shops
Close To Town
Close To Marina

Pool

Private Pool

Features

Ensuite Bathroom
Private Terrace
Double Glazing
Marble Flooring
Fiber Optic
Fitted Wardrobes
wifi

Security

Entry Phone

Furniture

Fully Furnished

Orientation

South East

Climate Control

Air Conditioning
Hot A/C
Fireplace

Kitchen

Fully Fitted

Parking

Garage

Condition

Good

Views

Mountain
Panoramic
Country

Garden

Private

Category

Investment
Resale
Reduced