



Costa Nova Properties

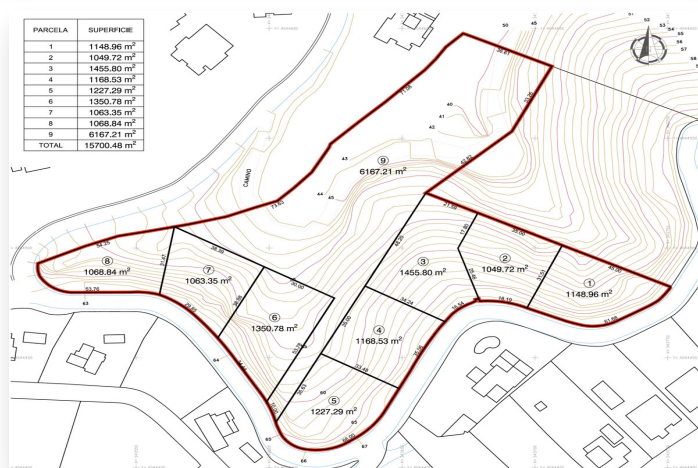
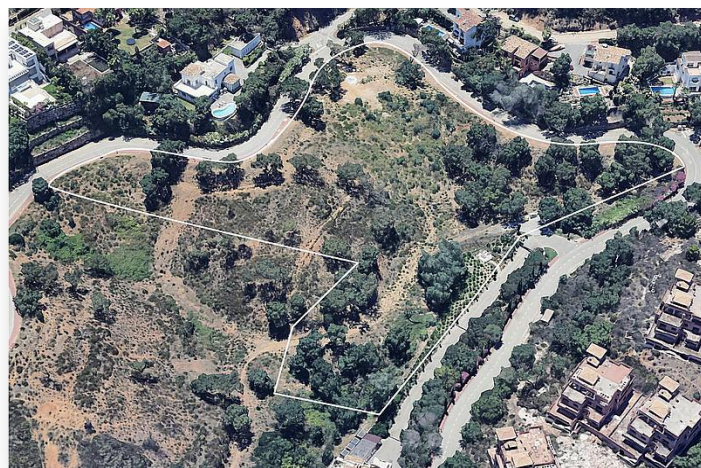
info@costanova-properties.com

+34 682 169 196

## Plot of land in Elviria

**2,355,000 €**

**Reference:** ila1264 **Plot Size:** 15,700m<sup>2</sup>





---

## Location: Elviria

This sprawling plot, with an impressive area of no less than 15,700 square metres, offers a unique opportunity for large-scale property development. The site is ideally located in the sought-after and greenery-rich La Mairena neighbourhood, surrounded by natural beauty and a peaceful ambience. On this site, there is potential for the construction of eight exclusive luxury villas and six characterful townhouses that blend perfectly with the charming surroundings. This location offers investors and developers an excellent opportunity to capitalise on the growing demand for premium homes in the much-loved Elviria area. Do not wait any longer and seize this exceptional opportunity to be part of one of the most promising real estate projects in this region.



## Features:

### Setting

Close To Golf  
Close To Shops  
Close To Sea  
Close To Schools  
Country  
Mountain Village

### Category

Investment  
Luxury

### Orientation

East  
South West  
North  
West  
North West

### Views

Sea View  
Mountain  
Panoramic