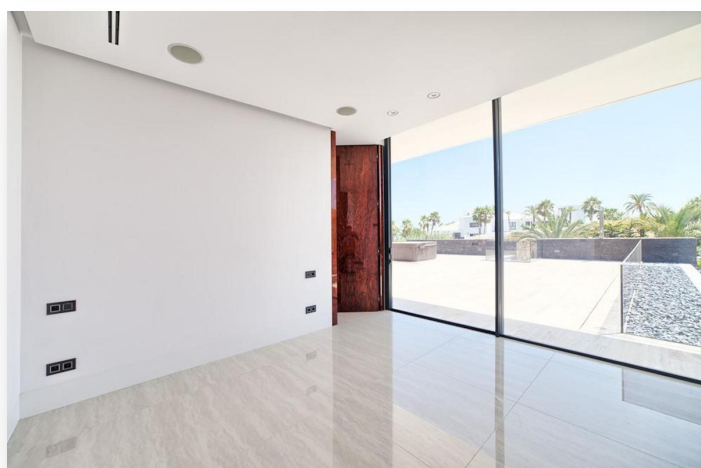
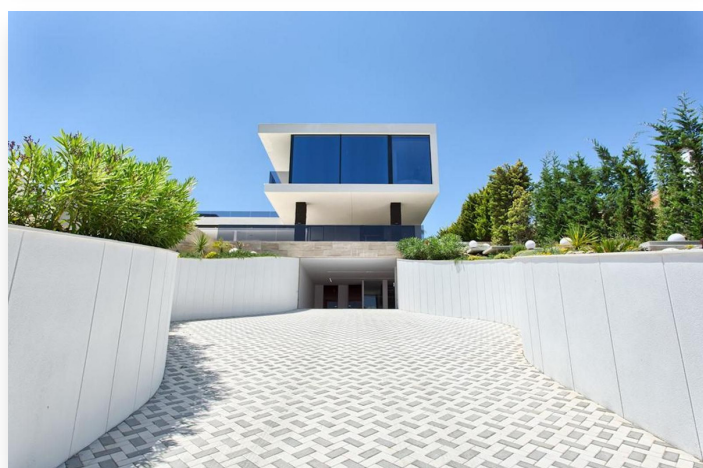
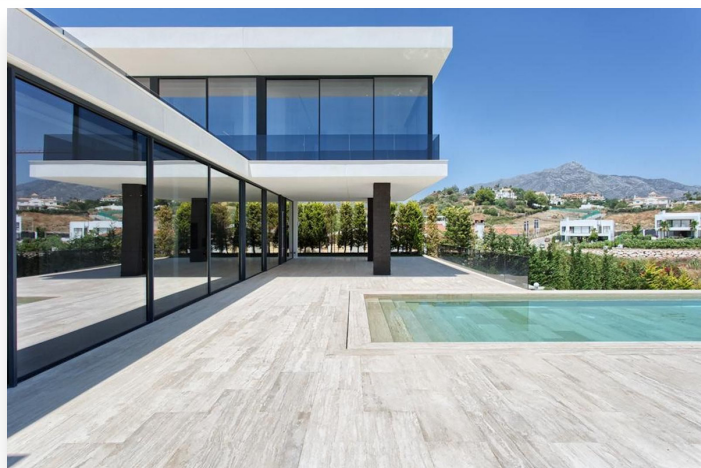
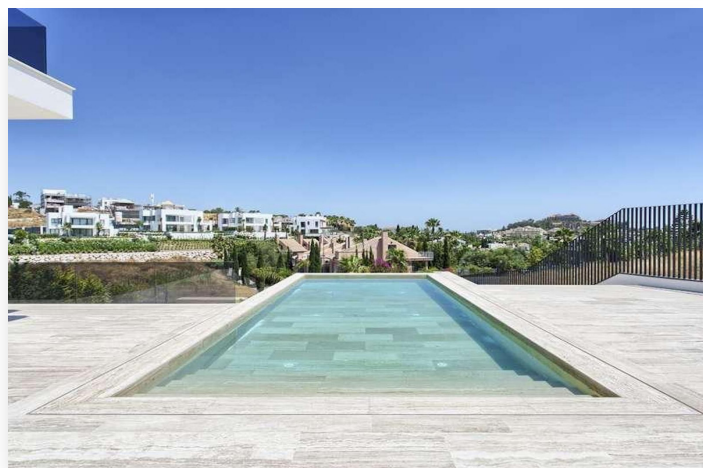


## Villa in Nueva Andalucía

**3,999,000 €**

**Reference:** MLSC4132925 **Bedrooms:** 6 **Bathrooms:** 6 **Plot Size:** 1,392m<sup>2</sup> **Build Size:** 728m<sup>2</sup>



## **Location: Nueva Andalucía**

Contemporary villa built to the highest standards and specs. Ideally located in the residential Golf Valley near the famous golf courses Los Naranjos and Las Brisas. South to southeast facing with golf and mountain views and partial sea views from the upper level. Close to all amenities, the beach and Puerto Banús. The property comprises on the main level of a spacious living/dining opening onto the terrace and with access to the garden and infinity pool, open plan fully fitted kitchen, laundry area, two en-suite bedrooms and guest toilet. On the upper level there is the master bedroom suite and two further en suite guest bedrooms. Direct access to the roof terrace with Jacuzzi. On the lower level there is a cinema room, storage, staff accommodation with bedroom and bathroom and a garage for 4 cars. Some of the features include: elevator to all floors, Sonos/Bose sound system, home automation system, A/C with heating and under floor heating and cooling (Daikin), Technal windows, Bandalux sun blinds, Krion, Flos and Delta lightning, Vimar switches, kitchen Santos with Gaggenau appliances, floors Travertin natural stone. A really unique and exceptional property in this exclusive area in the Golf Valley of Nueva Andalucía.

## Features:

### Features

Condition - Excellent  
Features - Fiber Optic  
Category - Investment  
Category - Holiday Homes  
Features - Ensuite Bathroom  
Features - Fitted Wardrobes  
Climate Control - Hot A/C  
Climate Control - Cold A/C  
Climate Control - Air  
Conditioning  
Features - Double Glazing  
Features - Covered Terrace  
Category - Golf  
Climate Control - Fireplace  
Features - Basement  
Features - Barbeque  
Climate Control - U/F/H  
Bathrooms  
Features - Games Room  
Category - Luxury  
Category - Contemporary  
Features - Domotics

### Energy Rating

X