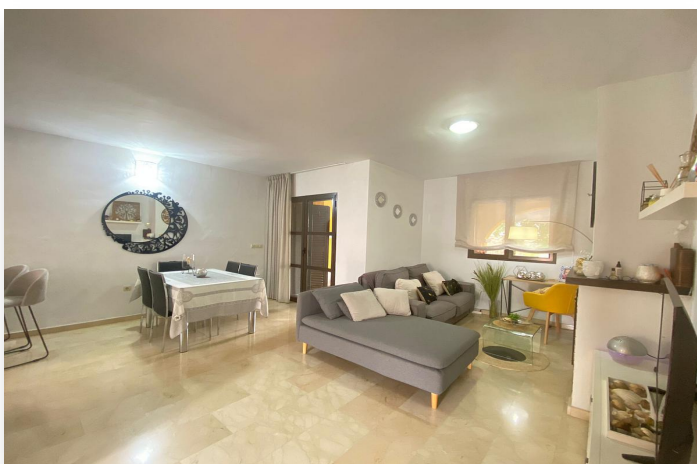


Villa in Hacienda Del Álamo Golf Resort

149,950 €

Reference: MLSC7676521 **Bedrooms:** 2 **Bathrooms:** 2 **Plot Size:** 232m² **Build Size:** 122m²



Location: Hacienda Del Álamo Golf Resort

This great value terraced villa is located on Hacienda del Álamo Golf Course with communal swimming pool. The villa of 122m2 is set on a very good sized plot of 232m2 with abundantly landscaped gardens back and front. The garden is very spacious, attractive and low-maintenance and practical at the same time. Access from road, large front garden with main entrance to property, entrance hall leading into the large living/dining area with large patio doors leading out to the large covered terrace and garden, open plan kitchen with access to outdoor storage room and stairs that lead up to solarium, two double bedrooms with fitted wardrobes, master bedroom with ensuite bathroom with bath and additional bathroom with shower. Air con throughout the property hot & cold. Car park closeby, communal swimming pool open all year. Community 91€ per month, 500€ council tax. CONTACT US NOW FOR A VIEWING!

Hacienda del Alamo Golf Resort was designed by Dave Thomas and was built in keeping with the natural terrain. The 18 hole golf course measures over 6,692 metres and takes up to five hours to play. The clubhouse is a 2,000 m2 three storey building in which you will find a restaurant and terrace with views of the golf course and a full range of amenities including a VIP room, billiards, television room, bag room, bars etc. There is a 4 star Hotel with two restaurants, a bar, 4 conference rooms and private rooms. The hotel has 102 double rooms and 26 suites and a spa with massage cabins, gym, Turkish and roman baths, sauna, jacuzzis, indoor and outdoor swimming pools and service areas. The three major cities in the area are Murcia, Cartagena and Lorca, all within easy reach of Hacienda del Alamo. Easy access to Alicante, Murcia and Corvera airports. The motorway has excellent connections to the regional network. Ideally located between Murcia and Cartagena with a wide selection of beaches close to the resort.

Distances:

Corvera Murcia Airport - 15 minutes

Alicante Airport - 1 hour and 15 minutes

El Limonar International School - 25 minutes

Kings College School - 30 minutes

Arrixaca Hospital - 25 minutes

Features:

Pool

Communal Pool

Climate Control

Air Conditioning

Features

Paddle Tennis
fireplace
heating
Fitted Wardrobes
Central Heating
Garden
Landscaped gardens
Pool
Good Road Access
Mature Garden
Close to all Amenities
Easily maintained gardens
Marble Floors
Lounge Dining Area
partly furnished
good condition
beautiful garden
Open Plan Kitchen

Energy Rating

X