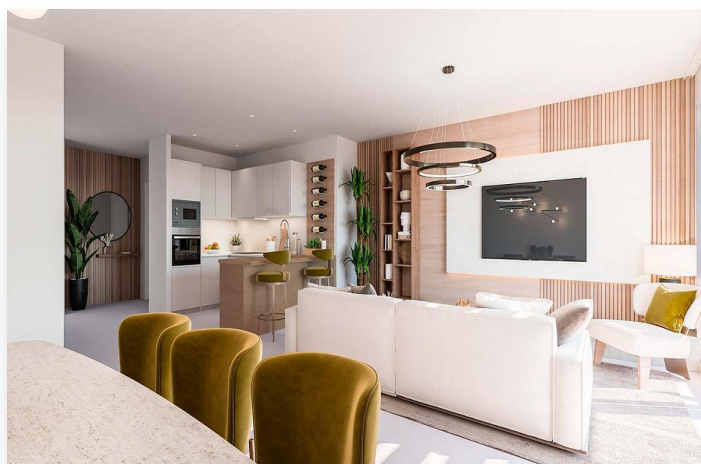
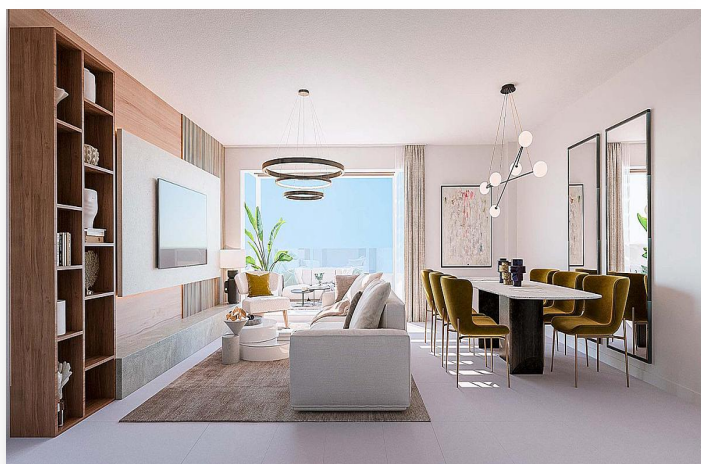
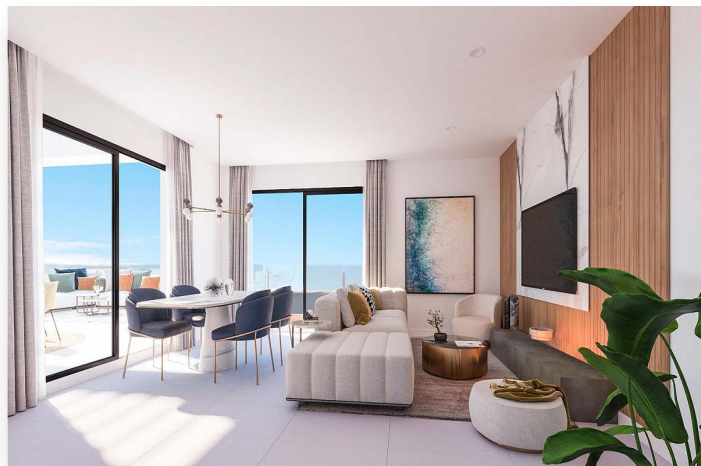




Penthouse in Benalmádena

630,000 €

Reference: 749462/3148 **Bedrooms:** 2 **Bathrooms:** 2 **Build Size:** 103m²





Location: Benalmádena

*** PENTHOUSE FACING SOUTH WITH 108SQM OF OUTDOOR SPACES BETWEEN COVERED AND UNCOVERED TERRACES AND SOLARIUM !!!.

**** APARTMENTS, PENTHOUSES AND SEMI-DETACHED HOUSES WITH SEA VIEWS FOR SALE IN BENALMÁDENA READY TO DELIVER AT THE END OF THIS YEAR !!!.

An exclusive, private development situated in a privileged location in Benalmádena. Thanks to its elevated position, all homes boast breathtaking panoramic views of the sea and the coast.

The sloping terrain allows for staggered housing, with large terraces that are further enhanced by glass railings that appear to blend seamlessly with the sea in front, allowing for maximum appreciation of the views and the stunning sunlight.

Cosy 2 and 3-bedroom apartments with large terraces, bright penthouses, and semi-detached with private gardens and terraces.

The terraced layout overlooking the Mediterranean Sea means that each and every one of the 49 homes and 2 semi-detached houses enjoy bright rooms thanks to natural light.

Contemporary Mediterranean architecture.

Natural light in all units.

Unique spaces.

Outdoor swimming pool.

All the services of the Costa del Sol at your fingertips.

Spectacular panoramic Sea Views.

Unbeatable location at the foot of the Benalmadena golf course.

Close to hospital.

Multipurpose Room.

Gym.

Penthouses with solarium.

The Costa del Sol, with its great variety of landscapes from the sea to the mountains, has for decades been one of the favourite areas for visitors from all over the world for tourism or as a place of residence.

Its privileged climate all year round, its picturesque and traditional villages, the friendly character of its people and its gastronomy, make the Costa del Sol an idyllic and welcoming place.

*** DO NOT MISS THE OPPORTUNITY AND CONTACT US NOW !!!.



Features:

Pool

Communal Pool

Features

Gym
heating
Solarium
Garage
Garden
Elevator
GYMNASIUM
Terrace
Wardrobes cupboard
Appliances
Storeroom
Light
Water
Video Intercom
Balcon
Vistas Al mar
A/A
T. V.
Auto Irrigation.
Residencial
Armored Door
Automatic Doors
Mirador
Corner
High Ceilings
double garage
Heat Cooling Pump
Illuminated
Adapted housing