



Costa Nova Properties

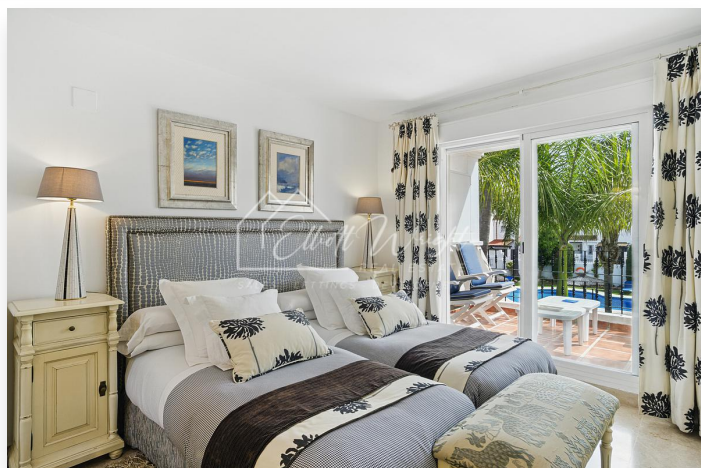
info@costanova-properties.com

+34 682 169 196

Townhouse in Nueva Andalucía

749,000 €

Reference: 5375MLTH **Bedrooms:** 3 **Bathrooms:** 3 **Build Size:** 165m² **Terrace:** 40m²





Location: Nueva Andalucía

Located in the prestigious community of Los Naranjos de Marbella, this spacious semi-detached house offers a privileged setting with landscaped gardens, communal pool and a Mercadona supermarket. Within walking distance of Puerto Banus and just a few minutes drive from the center of Marbella, this house combines comfort and exclusivity. The house enjoys an excellent east-west orientation, allowing natural light throughout the day, and offers breathtaking views of the pool, gardens and mountains. On the ground floor, we find a spacious and bright kitchen with access to the utility room. The spacious living-dining room, with large windows, opens to a charming terrace ideal for enjoying the Mediterranean climate. On the first floor is the master bedroom en suite with private terrace, along with two guest bedrooms that share a bathroom. One of these bedrooms also has access to the terrace. The second floor has a solarium, perfect to relax and enjoy the panoramic views. In addition, in the attic area there is the possibility to create an additional bedroom simply by removing a partition. Among its features are the built-in wardrobes, cold/hot air conditioning, marble floors and an outdoor garage space inside the property. Unlike many townhouses, it only shares a wall with the neighbour, thus enjoying greater privacy. A unique opportunity to live in an exclusive environment, with all the amenities at your fingertips.



Features:

Setting

Close To Sea

Climate Control

Air Conditioning

Features

Private Terrace

fireplace

Fitted Wardrobes

Barbeque

close to schools

Close to Shops

Garden View

Close to Golf

Balcony

Pool View

Close to Town

Fully Fitted Kitchen

Mountain view

Laundry room

Marble Floors

Surveillance Cameras

good condition

Close to children playground

Amenities near

Transport near

Ground floor patio