



Costa Nova Properties

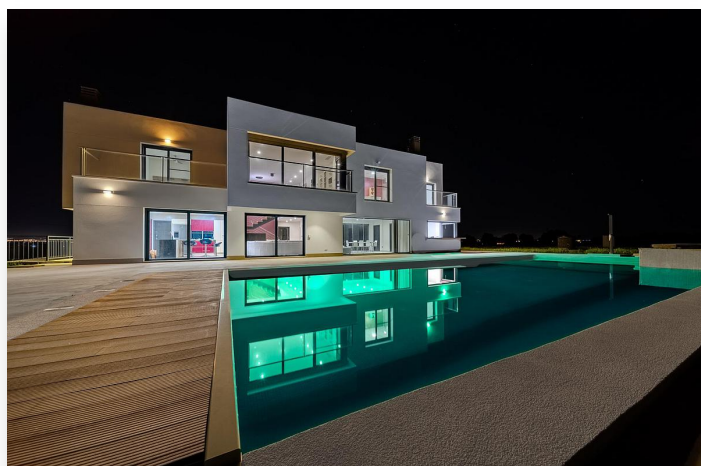
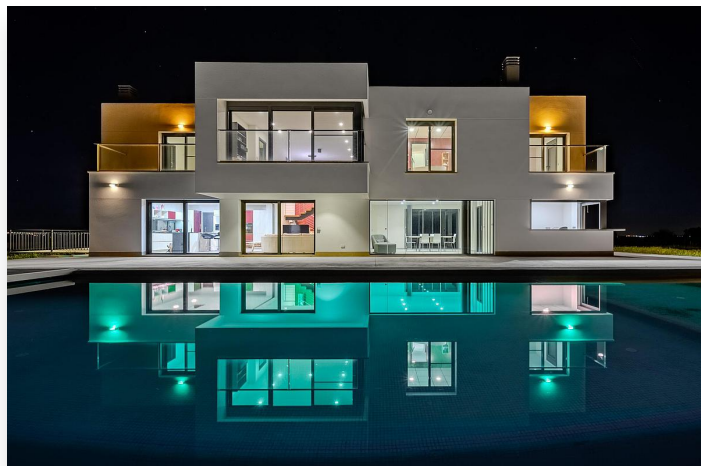
info@costanova-properties.com

+34 682 169 196

## Villa in La Marina

**1,150,000 €**

**Reference:** MLSC1233318 **Bedrooms:** 5 **Bathrooms:** 4 **Plot Size:** 10,602m<sup>2</sup> **Build Size:** 506m<sup>2</sup>





## Location: La Marina

Nestled in La Marina del Pinet (Elche, southern Alicante), this stunning contemporary-style villa was built in 2016 on an expansive 10,600 m<sup>2</sup> plot, offering absolute tranquility and privacy. With optimal sun exposure throughout the day, it boasts 360° panoramic views of the countryside and surrounding mountains. Its strategic location ensures excellent connectivity: just 5 km from the beach, 3 km from La Marina village, 20 km from Elche and Torrevieja, and 25 km from Alicante Airport. □ A home designed for limitless living and enjoyment. Built with top-quality materials and no detail spared, this exceptional property delivers superior levels of comfort, security, and functionality: Anti-theft security windows Electric blinds and mosquito screens throughout Premium appliances and designer kitchen Full accessibility: elevator from basement to first floor, ramps, wide and sliding doors □ Natural light, open-plan design, and stunning views. The south-facing façade, which opens toward the pool, features expansive windows that fill the interior with natural light. On the main floor, a spacious fully equipped kitchen connects seamlessly to the open-concept living area. These spaces can be divided with elegant sliding glass doors for added versatility. The central island includes an induction cooktop and extends into a stylish table with seating for up to 12 guests. A laundry room with exterior access completes the space. From the living room, a large covered terrace is accessed through a retractable glass door. Accordion-style windows open completely to the north and south, creating a seamless indoor-outdoor experience. The terrace leads to a storage room, a summer kitchen with bar and indoor barbecue, and an outdoor bathroom. Also on this level is a guest bedroom with en-suite bathroom and a separate guest toilet. □ Private spaces designed for total relaxation. Upstairs—accessible via elevator or stairs—you'll find a bright, open-plan room ideal as an office, games room, or gym. From here, enter the luxurious primary suite featuring a fireplace, private terrace, large walk-in closet, and an expansive bathroom with a central freestanding tub, oversized shower, double vanity, and separate toilet. Two additional bedrooms with en-suite bathrooms and private terraces are also located on this floor. □ Multifunctional basement and dream garage. The basement level offers a versatile room with a private bathroom—perfect as a fifth bedroom, home office, cinema, or fitness room. The extra-large garage accommodates several cars, motorbikes, and bicycles, and houses the technical systems for the pool. □ □ A year-round private wellness retreat. The 12 x 6-meter pool includes a gradual beach-style entry, a deeper lap lane, and a UV purification system, allowing for nearly chlorine-free, healthy swimming. The elevated 3 x 3-meter jacuzzi, overlooking the pool, creates a serene, zen-like setting. A heat pump system ensures both the pool and jacuzzi can be enjoyed year-round. A solar-powered shower is located poolside. □ Eco-efficiency and sustainability. The rainwater and greywater collection and recycling system is fully operational and used to irrigate the gardens, trees, and lawn—an eco-conscious solution that enhances comfort while respecting the environment. □ Property Layout: Main floor: 168.40 m<sup>2</sup> Upper floor: 125.55 m<sup>2</sup> Basement: 186.30 m<sup>2</sup> □ Are you ready to discover your future home? A modern, private, and fully functional paradise, just minutes from the sea. This is more than a property—it's a lifestyle. Contact us today to schedule your private visit. Your dream home is waiting!



## Features:

### Pool

Private Pool

### Features

Jacuzzi  
Garden  
Laundry room  
BBQ  
gated  
Near Golf / Golf Resort Property  
Near Trees  
Beach: 4000 Meters  
Elevator/Lift  
Air Conditioning: Yes  
Under-Build / Basement  
WC: 1  
Location: Rural, Mountain  
Double Bedrooms: 5  
Useable Build Space: 424 Msq.

### Energy Rating

D

### Furniture

Fully Furnished