



Costa Nova Properties

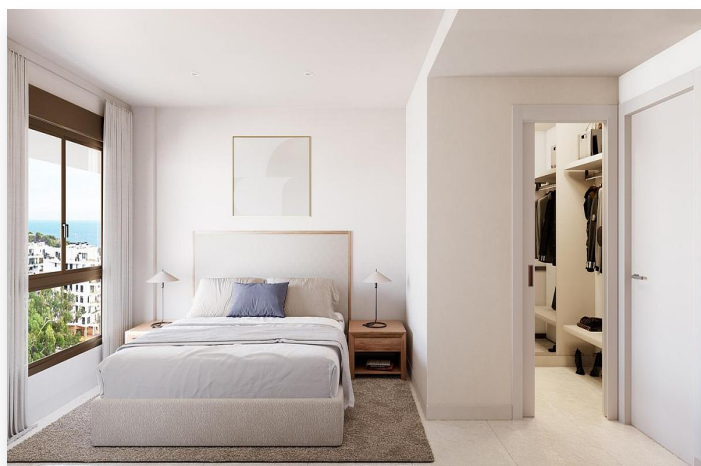
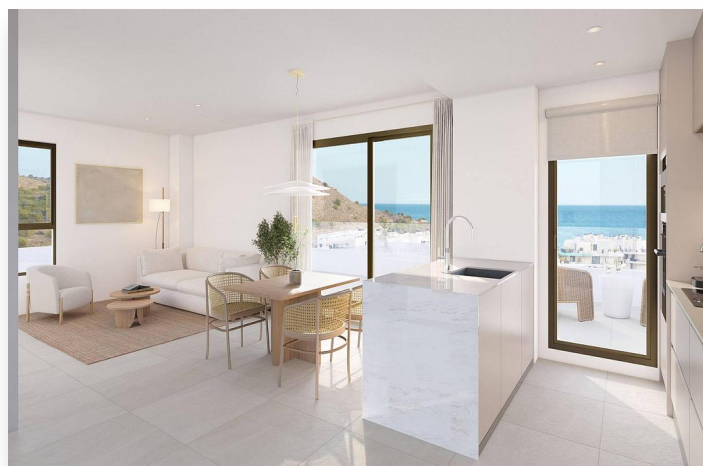
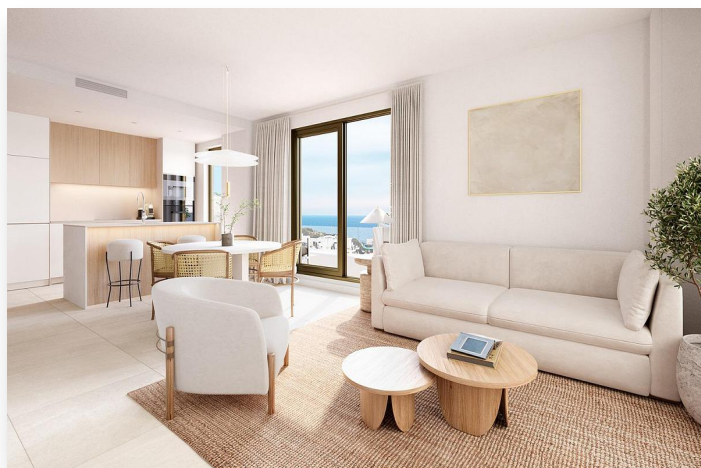
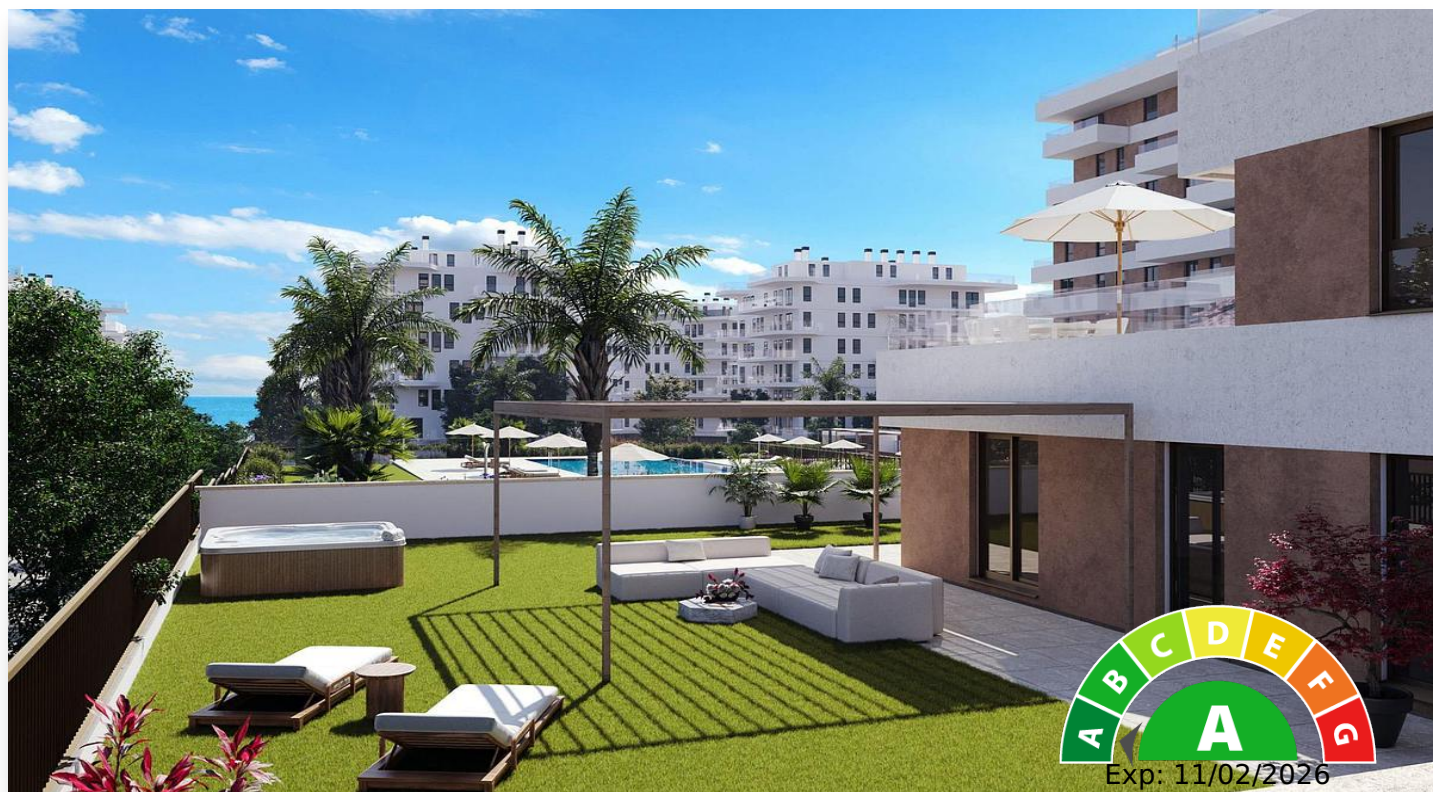
info@costanova-properties.com

+34 682 169 196

## Apartment in Villajoyosa

**515,000 €**

**Reference:** SP0995 **Bedrooms:** 3 **Bathrooms:** 2 **Plot Size:** 180m<sup>2</sup> **Build Size:** 111m<sup>2</sup>





## Location: Villajoyosa

### NEW BUILD RESIDENTIAL COMPLEX IN VILLAYOJOSA

New Build residential complex of apartments in Villajoyosa located just 450 meters from the sea.

Modern Apartments with 2 and 3 bedrooms, open plan kitchen with living area, large terraces and a complete urbanisation that includes a social club, gym and swimming pool.

Ground floor apartments have private garden.

Close to your new home you will find shopping centres, hospital and all kinds of services just a few minutes away.

Complex located just 2 km from the centre of Villajoyosa and 10 km from Benidorm.

Your new home is located in an idyllic corner, Playa del Torres, a natural environment. A cove of crystal clear and calm waters, where the turquoise blue is the main protagonist.

All properties has private parking space.

Villajoyosa is a hidden pearl on the Spanish Costa Blanca. This colourful fishing village is located between Benidorm and El Campello, about 30 minutes by car from Alicante airport.

In recent years, the idyllic town has become a sought-after location for second-home residents and tourists. Villajoyosa has a lot to offer, from the wide sandy beach to the narrow and colourful streets of the historic town centre.

Today, more than thirty thousand people live in Villajoyosa and, above all, the colourful houses offer tons of inspiration for the many artists.

Villajoyosa is also known for its delicious Valor chocolate factory museum.



## Features:

### Pool

Communal Pool

### Features

Gym  
Garden  
gated  
Number of Parking Spaces: 1  
Near Schools  
Air Conditioning: Pre-Installed  
Double Bedrooms: 3  
Near Commercial Center  
Location: Coastal, Urbanisation  
Near Childrens Parks  
Elevator/Lift  
Beach: 450 Meters  
Terrace: 57 Msq.  
Parking - Space  
Useable Build Space: 83 Msq.

### Energy Rating

A