



Costa Nova Properties

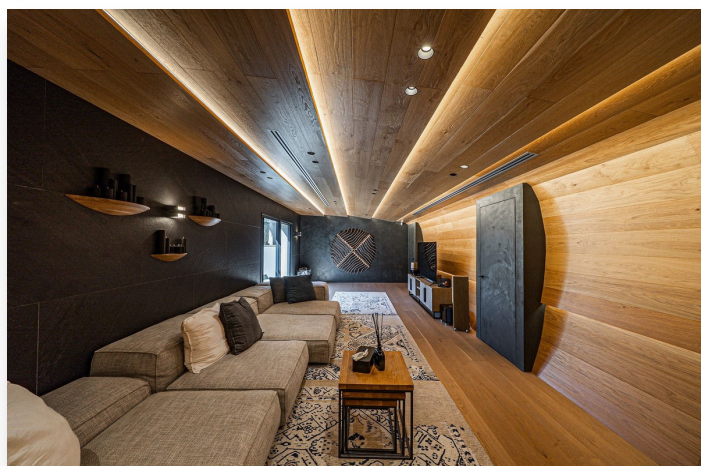
info@costanova-properties.com

+34 682 169 196

Villa in Guadalmina Baja

12,900,000 €

Reference: R5060938 **Bedrooms:** 10 **Bathrooms:** 10 **Plot Size:** 3,106m² **Build Size:** 1,303m² **Terrace:** 280m²





Location: Guadalmina Baja

Frontline Golf Villa in Guadalmina Baja - Contemporary Elegance with Golf Views

Set on the edge of the prestigious Guadalmina golf course, this exceptional frontline golf villa offers a refined lifestyle just minutes from the coast. Located in the sought-after Guadalmina Baja area, this home combines sleek architecture with expansive interiors and unbeatable outdoor flow.

The villa is fully furnished and designed for effortless living. Spread across several levels, it includes generous living areas, a gourmet kitchen, home office, and an inviting dining room—each space crafted with both comfort and style in mind. Floor-to-ceiling windows flood the home with natural light while offering panoramic views over manicured fairways.

Wellness and leisure are seamlessly integrated into the design. Unwind in your private spa zone with a sauna, Turkish bath, massage room, and snow room. Stay active in the fully equipped gym, or enjoy movie nights in your personal cinema. Kids and guests will love the game room and multiple spacious suites, while staff accommodation ensures smooth day-to-day living.

With over 1,300 m² of built space and a 3,100 m² plot, the home also features expansive terraces, landscaped gardens, and a large garage. This is a frontline golf villa that embraces Marbella's indoor-outdoor lifestyle.

Guadalmina Baja is known for its elite golf club, golden beaches, and proximity to Puerto Banús. Fine dining, international schools, and luxury shopping are just a short drive away—making this a perfect base for enjoying the best of the Costa del Sol.

Arrange your private tour and experience frontline golf living at its finest.



Features:

Setting

Beachside
Close To Golf
Urbanisation
Close To Sea
Frontline Golf

Pool

Private Pool

Garden

Private
Landscaped

Category

Resale
Luxury

Orientation

South

Features

Ensuite Bathroom
Private Terrace
Double Glazing
Staff Accommodation
Games Room
Gym
Basement
Sauna
Fitted Wardrobes

Security

Entry Phone

Condition

Excellent

Kitchen

Fully Fitted

Parking

Garage
More Than One