



Costa Nova Properties

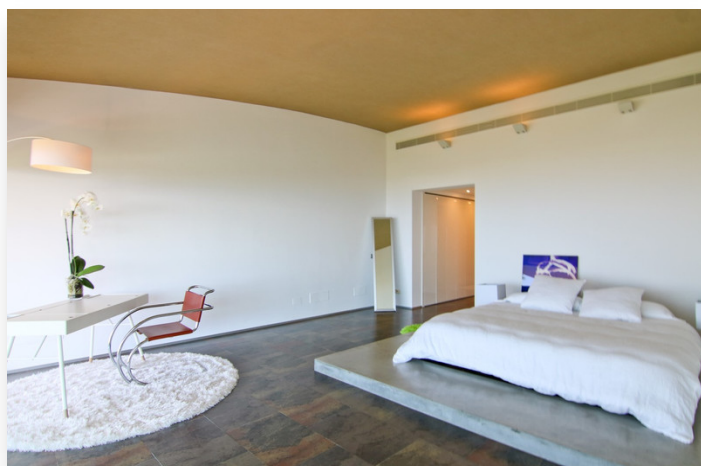
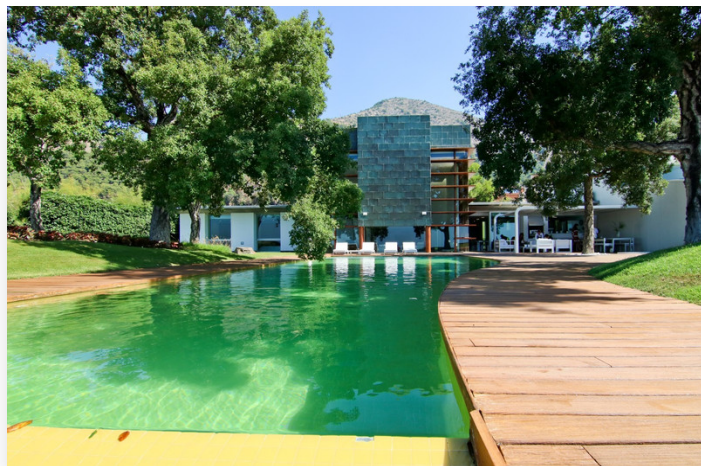
info@costanova-properties.com

+34 682 169 196

## Villa in Benalmadena Costa

**4,900,000 €**

**Reference:** R3234244 **Bedrooms:** 5 **Bathrooms:** 4 **Plot Size:** 2,813m<sup>2</sup> **Build Size:** 497m<sup>2</sup> **Terrace:** 277m<sup>2</sup>





## Location: Benalmadena Costa

Characterised by the Visual Strength of the avant-garde style and its Spectacular sea Views, Villa Sena stands as the Villa that makes the Difference. Luxurious, Magnificent, minimalist. The main premise of this Project has consisted of maximising the Brightness in all rooms by filling them with Natural Light and maximize the luminosity of the place...

The Unusual Shape make this Villa an Exclusive and Unique Design, both in terms of Architecture and Outer Views. A Garden of Wavy, Smooth, and Modern Lines; an Infinity Pool that Invites you to Relax. Spectacular sea views to the Bay of Fuengirola. Nature, views and privacy will wrap you in a fascinating vibes

Detached Villa, Benalmadena Costa, Costa del Sol.

5 Bedrooms, 4 Bathrooms, Built 497 m<sup>2</sup>, Terrace 277 m<sup>2</sup>, Garden/Plot 2813 m<sup>2</sup>.

Setting : Close To Golf, Close To Shops, Close To Sea, Close To Town, Close To Schools, Urbanisation.

Orientation : South.

Condition : Excellent.

Pool : Private.

Climate Control : Air Conditioning, Fireplace, U/F/H Bathrooms.

Views : Sea, Panoramic, Garden, Pool.

Features : Covered Terrace, Fitted Wardrobes, Near Transport, Private Terrace, Games Room, Storage Room, Utility Room, Ensuite Bathroom, Wood Flooring, Disabled Access, Jacuzzi, Barbeque, Double Glazing, Domotics, Staff Accommodation.

Furniture : Fully Furnished.

Kitchen : Fully Fitted.

Garden : Private, Landscaped, Easy Maintenance.

Security : Gated Complex, Entry Phone, Alarm System, 24 Hour Security.

Parking : Garage, More Than One.

Utilities : Electricity, Drinkable Water, Telephone.

Category : Holiday Homes, Investment, Luxury, Contemporary.





## Features:

### Setting

Close To Golf  
Urbanisation  
Close To Shops  
Close To Sea  
Close To Town  
Close To Schools

### Pool

Private Pool

### Features

Covered Terrace  
Near Transport  
Storage Room  
Ensuite Bathroom  
Private Terrace  
Double Glazing  
Utility Room  
Staff Accommodation  
Games Room  
Wood Flooring  
Domotics  
Fitted Wardrobes  
Jacuzzi  
Barbeque  
Access for people with reduced mobility

### Security

Gated Complex  
24 Hour Security  
Entry Phone  
Alarm System

### Category

Holiday Homes  
Investment  
Luxury  
Contemporary

### Orientation

South

### Climate Control

Air Conditioning  
Fireplace  
Underfloor Heating in  
Bathrooms

### Kitchen

Fully Fitted

### Parking

Garage  
More Than One

### Furniture

Fully Furnished

### Condition

Excellent

### Views

Sea View  
Panoramic  
Garden  
Pool

### Garden

Private  
Easy Maintenance  
Landscaped

### Utilities

Electricity  
Drinkable Water  
Telephone